



Patricia J. Gibboney
Executive Director
pjgibbo@aol.com

Carol Ann Spencer O.P.
Wellstreams Director
carol.spencer1@juno.com
www.wellstreams
columbus.org

Amanda Stone Cushing
Program Coordinator
ascushing4@hotmail.com

Sandra Kerka
Newsletter Editor
skerka@insight.rr.com

The Spirituality Network,
Inc. provides:

- Education and formation through the Wellstreams Training Program
- Spiritual direction referrals for groups and individuals
- Retreat planning and facilitation
- Programs to foster the spiritual life
- Connection to a variety of spirituality resources in central Ohio

As an ecumenical organization, the Spirituality Network serves people both within and outside of religious institutions.

SPIRITUALITY NETWORK

444 E Broad St
Columbus OH 43215
Phone 614.228.8867
Fax 614.228.8975
spiritnetwk@hotmail.com
spiritualitynetwork.org

Twitter: www.twitter.com/spiritnetwk
Facebook: www.facebook.com; search "Spirituality Network, Columbus, Ohio"

HE IS TRULY RISEN

by *Wayne Rapp*

For me, 2009 was a year of incredible loss. Three friends — men who have been an important part of my life in Columbus — died during the last half of the year. These were men who shared my table, my home, my friendship, as I had shared theirs. Two were taken suddenly, one after a lingering and painful deterioration. All I have left is a hole in my heart that will not be filled. When I am in the company of their families, I am reminded of their loss, and I can hardly bear the emptiness myself. I know that part of my sorrow is an encounter with my own mortality. We were close in age, the four of us, and I know my time to join them is approaching. Perhaps, more rapidly than I can even guess. It frightens me.

For the days that are Lent, I will remain in that darkness as I walk toward the cross and the tomb beyond it. Standing at the foot of the cross on Good Friday, I can experience utter despair as life slips away and a loved one is gone from me. It is a time of true darkness.

Only the tomb — the empty tomb — offers me relief. I believe firmly in the promise of the Resurrection, the last great gift from our Brother, Jesus. I know that my friends have seen the healing Light of our Savior and experienced a total release from their pain.

This year, I will let that knowledge soothe my own fear and lift me out of my sorrow as it should all of us who call ourselves Christians. My own Easter will dawn bright and beautiful as I move toward the healing Light, and I will bathe unafraid in the tenderness of God's love.

SPIRITUALITY NETWORK EVENTS

PREREGISTRATION IS REQUIRED. SPACE IS LIMITED.
To register, send name, phone, e-mail, and name of program to Spirituality Network ATTN: PROGRAMS, 444 E Broad St, Columbus, OH 43215; call 614/228-8867; or e-mail spiritnetwk@hotmail.com.

Continuing Education and Professional Enrichment Workshops:

INTRODUCTION TO THE ENNEAGRAM: A JOURNEY TO SELF-UNDERSTANDING

Saturday, April 24, 2010, 9:30am–3:30pm
Facilitated by Sr. Carol Ann Spencer, OP, at Martin de Porres Center. \$50 PREPAID by April 17; \$65 after; includes lunch. PREREGISTRATION REQUIRED (see above).

The Enneagram of Personality is a source of self-understanding, offering a much deeper, broader approach than other personality theories. It can be of great value to those seeking deeper understanding of behavior patterns, motivations, and ways to become more balanced. This workshop will provide an overview of the basic concepts of the Enneagram as well as an introduction to each of the personality types.

Sr. Carol Ann Spencer, OP, Dominican Sister of Peace, is a spiritual director, retreat leader, and Director of the Wellstreams training program. She earned an M.P.S. in Pastoral Studies from Loyola University in Chicago where she received a Certificate for Enneagram Workshops.

MINISTERING TO THE MINISTERS: A DAY OF RENEWAL FOR PEOPLE IN MINISTRY

Tuesday, April 20, 2010; 9am–2pm
Martin de Porres Center. \$30 PREPAID by April 14; \$45 after; includes lunch. PREREGISTRATION REQUIRED (see above).

Clergy ~ Chaplains ~ Spiritual Directors: If you are in any kind of caring ministry, we hope that you will join us for a day away to reflect, renew, and refresh your spirit. This day of renewal will include community prayer, discussion, silent reflection, and individual meditation time; as well as fellowship at our shared meal.

HEALING ENERGY: THE CHRISTIAN APPROACH TO REIKI

Saturday, March 20, 2010, 9:30am–12pm
Facilitated by Donita Harris at the Spirituality Network \$25 prepaid by March 15; \$35 after.
PREREGISTRATION IS REQUIRED. SPACE IS LIMITED.

Reiki is an energy balancing technique for pain relief, relaxation, and healing through a gentle laying-on of hands. It is an avenue for expressing and receiving compassion and creating a deeper sense of connection to God. We will look at what Reiki is, how it is practiced and received, and what Christian teaching has to tell us about healing practices. Donita Harris is a Reiki Master, Spiritual Director, and Christian Lay Minister in the United Methodist Church.

SACRED FEMININE

Our cultural heritage gives us images of The Divine that are overwhelmingly masculine. How do women recognize and claim that they, too, are created in God's likeness? Join us on the second Tuesday of each month as we gather for discussion, reflection, and exploration on a variety of topics that help us to connect to uniquely feminine aspects of The Divine. Our intention is to discover more balance, create more peace, and offer more hope to our world.

First Congregational Church, 444 East Broad St.
PLEASE RSVP: 614/228-8867 or spiritnetwk@hotmail.com. Donations accepted (suggested donation: \$5).

HEALING AND TRANSFORMATION THROUGH MEMOIR

April 13, 2010, 2-4pm, facilitated by Amanda Stone Cushing. **PLEASE PREREGISTER: 614/228-8867.** We will look at the genre of memoir in general and women's stories in particular, as a means to discovering the deeper meaning of our experiences. A short writing exercise will provide a springboard for discussion. (Rescheduled from February)

SACRED FEMININE WISDOM AND CARING FOR MOTHER EARTH

May 11, 2010, 2-4pm, facilitated by Barbara Davis. **PLEASE PREREGISTER: 614/228-8867.**

We will explore what some contemporary prophets (Thomas Berry, Judy Cannato) are saying about how significant the Feminine Wisdom is in healing the earth and how engaging this kind of presence may help to heal our planet and our relationships on it. Barbara Davis is a spiritual director, quilt artist, and grandmother with a deep desire to bring balance, healing, and wholeness to our world.



THE RIVER'S VOICE:

MUSIC, STORY, PRAYER, AND CELEBRATION
WITH RICHARD AND TRISH BRUXVOORT
COLLIGAN

We are delighted to have Richard and Trish Bruxvoort Colligan with us to celebrate our annual meeting. Together this husband and wife singer-songwriter team is called The River's Voice. They are "known for their depth of wisdom, playful spirits, and fully engaged presence."

Light Dinner, Music, and Celebration

Friday, June 18, 2010; 6:30-9pm

Tickets: \$35; groups of 5 or more: \$30 each

A Contemplative Musical Retreat Day

Saturday, June 19, 2010; 9:30am-3:30pm

Registration fee: \$50; Groups of 5 or more: \$45 each

Includes lunch

BOTH FRIDAY AND SATURDAY: \$75; groups of 5 or more:
\$65 each

Both events at the Martin de Porres Center, 2330 Airport Dr.

A River's Voice concert is full of stories, laughter, and music for young and old. River's Voice retreats and workshops are sometimes playful, sometimes contemplative, integrating mind, body, and spirit. In music and in leadership, Trish and Richard bring a quality of wonder, gratitude, and reverence for what's alive and awakening.

The duo has published over a dozen CDs between them over the past 10 years.

Their collective voice is simultaneously powerful and gentle, with songs that rise from the wellspring of their passion for the human journey and the mystery of the spiritual life. The values of compassion, wisdom, and beauty are more than just fancy little things to sing about; they are the very ground from which their lives and art take root.

The couple tours as professional musicians, songwriters, and retreat leaders. Together with their son Sam, they live in an 1880s-era house in the hills of Strawberry Point, Iowa with three crazy cats, and a sweet, grandmotherly dog.

<http://www.slab500.com/riversvoice/>

SPIRITUALITY NETWORK SPECIAL EVENT



Richard and Trish Bruxvoort Colligan

THE SPIRITUALITY NETWORK AND SOCIAL JUSTICE

by Wayne Rapp

One of the pillars on which the Spirituality Network was founded was the idea of being itinerant, going out to the people rather than having them always come to us. The Women-to-Women program is a perfect example of this ministry. It is a program of self-discovery, one of support and empowerment carried out in locations such as homeless shelters. It is also one in which those from the Spirituality Network who have been involved say they feel they bring away much more from the women than they leave behind. Being itinerant is something we did more of in the early days than we seem to do now.

Although we will always have programs that entice people to come to us, the Spirituality Network board is attempting to identify situations in which the organization would take its talents, generous spirit, and compassion into the community. Last spring, members of the board spent a Saturday morning at the United Methodist Church for All People on south Parsons Avenue. We helped prepare and serve breakfast to a large group of people from the neighborhood who depend on the church for food and clothing. After cleanup, we helped sort and size clothes that had been donated to the church's Free Store. It was an enlightening and rewarding experience for all who participated.

continued on p. 12

REFLECTIONS FROM THE CHAIR

REFLECTIONS

by Katherine Murphy Mertzlufft

SPIRITUALITY NETWORK BOARD OF DIRECTORS

Katherine Murphy Mertzlufft
Chair, Spiritual Director

Alex Rodriguez, Vice Chair
Nationwide Insurance

Jacquelyn Dean, Secretary
Educator, Spiritual Director

Father Ron Atwood
St. Francis of Assisi Church

Joe Fowler
Spiritual Director

Donita Roberts Harris
Community Development for
All People

Rev. Deborah C. Lindsay
First Community Church

Nancy Nikiforow
Spiritual Director

Wayne Rapp
Rapp Productions

Sharon Reed, Past Chair
Ohio Dominican University

Dan Schleppe
Spiritual Director

Maxine Shonk, OP
Dominican Sisters of Peace

Roy Smoot
PNC Bank

Ex-officio
Loretta Farmer
Spiritual Director to the Board

Barbara Davis
Spiritual Director

Artwork & Photo Credits:
p. 2, Sandra Torrijos/Isis
International-Manila
p. 5, Melvi Gelacio/Isis
International-Manila
p. 6, Justin Lowery, Creative
Commons license
p. 7, Liz Kuhn

At our last Spirituality Network Board meeting we spent time connecting with the experience of marginalization and exploring associated feelings from both our personal and shared perspectives. The exercise was intended to cultivate a deeper awareness of how we serve who we serve. Our conversation accomplished that purpose and also stimulated further contemplation on my part. The question we responded to is: When in my life have I personally experienced feeling marginalized and what was that like? I offer the question for your pondering, for surfacing what it brings up for you, and how it touches or tugs at your heart.

Several awakenings arose in me that I'd like to share. It seems that whether thrust into a place of marginalization by life circumstances or by our own false perceptions of self and others, or by messages we have received from childhood and beyond, experiences of marginalization are life alienating. In fact, any judgments of fortunate or unfortunate, more than or less than, create divisions through which both parties are affected and somehow diminished from the fullness of who they are. Even considering service and ministry there lies an inherent danger of coming from a separation between have's and have not's or some form of arrogance in which we are better than and they are less than. We live in a domination culture infused in the milieu of judgment and competition. Whenever we fail to see both the goodness and woundedness in all of humankind, we do violence to one another and our own selves. Yet our invitation remains a constant—to be compassionate.

Compassion in all of this is life calling for life. Often it is out of the margins that dreams are born. Out of injustice is born a resolve to make the world a better place. Examples abound.

- It was out of Martin Luther King's lived experience of inequality and inequity that he had a dream: a longing for something more, for a better world of equality, brother/sisterhood, and justice for all of God's children.
- A young Jewish boy's experience of growing up in a violent time and neighborhood in Detroit where he was beaten by other boys caused him to wonder what happens that disconnects us from compassion and turn to violence. Eventually, because of his own longing for compassion, a flow between self and others based on mutual giving and receiving from the heart, Marshall Rosenberg created the model of nonviolent communication now used throughout the world to mediate for peace and to bring heart-to-heart connection into relationships.
- It was out of an awareness of a pervasive "poverty of spirit" recognized by Sr. Noreen Malone and others—envisioning an inclusive way for all, regardless of church affiliation to grow in their spiritual life—that the Spirituality Network was born. Many of you continue to share in that dream by sustaining the mission of the Network of assisting those searching for spiritual growth and by sharing your time, talent, and treasure to make the world a better place where God's unconditional love can be a felt reality. Your generosity is deeply valued.

Let us continue to awaken to opportunities to live with a compassionate consciousness, to embrace our connection to each other and to all of creation.

Blessings of Peace and Love

WELLSTREAMS WORKSHOPS

Register with the Spirituality Network for these workshops: 614/228-8867 or e-mail spiritnetwk@hotmail.com; or online at www.wellstreamscolumbus.org.

EXPLORING CONTEMPORARY CHRISTIAN SPIRITUALITY

Mondays, April 12-May 3, 2010, 7-8:30pm, at the Spirituality Network. Facilitators (both teach an expanded version of this in the Wellstreams Program): Janice Bachman, OP, and Sharon Reed. \$60 by April 5, \$75 after. PREREGISTRATION REQUIRED: SPACE IS LIMITED.

This introductory series poses four important questions, which frame our understanding and experience of Christian spirituality in daily life. Opportunities for dialogue and reflection will be included in each session. Readings, handouts, or other pertinent materials will also be provided.

- April 12, 2010: What Is Christian Spirituality and How is It Relevant to MY Life?
- April 19, 2010: How Does a Person Living in This World Draw Close to God?
- April 26, 2010: What Are the Dynamics of the Spiritual Journey?
- May 3, 2010: How Do We Balance Busyness with Reflective Time in Our Daily Life?

Janice Bachman, OP, a Dominican Sister of Peace, is an experienced spiritual director, retreat director and Jungian Analyst. A graduate of Creighton University's Christian Spirituality Program, Janice is on the summer faculty of Creighton's Graduate Program in Christian Spirituality as well as a faculty member for Wellstreams.

Sharon Reed is an experienced spiritual director, retreat director, and a licensed professional counselor. She is currently Dean of Student Life at Ohio Dominican University and on the faculty for Wellstreams. Sharon is also a graduate of the Shalem Program in Spiritual Direction.

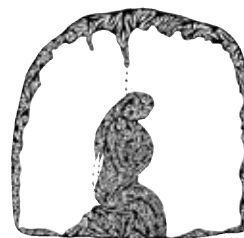
HORIZONS EXPANDING: A CONSIDERATION OF ECOLOGY AND SPIRITUALITY

Saturday, May 1, 2010, 9:30am-3:30pm, registration 9:10am, at Martin De Porres Center, St. Mary of the Springs. Facilitators: Marguerite Chandler and Joan Supel. \$55 before April 26, \$60 after. Brown bag lunch recommended so that we can continue some of the program outside. (weather permitting).

Through images, experiences, and personal reflection we will come to understand how intimately connected we are to the very origins of the Universe. We will consider our spiritual growth and our spiritual direction ministry in the context of the Universe Story: the "Great Work" spoken of by Thomas Berry and others. The explosion of knowledge in today's world challenges us to expand our consciousness about who are, and who we are in relation to God.

Marguerite Chandler and Joan Supel are both Dominican Sisters of Peace. Marguerite is currently living and working at Crown Point Ecology Center in Bath, Ohio. She had also served in the ministry of eco-spirituality at

WELLSTREAMS: AN ECUMENICAL TRAINING PROGRAM



IN SPIRITUAL
FORMATION
AND
DEVELOPMENT

www.wellstreamscolumbus.org

NEW WELLSTREAMS CLASS FORMING

Registration is open for the class that begins in August 2010. For information, see the website (www.wellstreamscolumbus.org). If you have further questions, please e-mail carol.spencer1@juno.com or call her at 614/228-8867.

The deadline for applications is April 15, 2010.

Shepherd's Corner and at Jubilee Farm in Springfield, IL. Marguerite received her training in spiritual direction at the Institute for Spiritual Leadership in Chicago.

Joan is a retreat director and spiritual director. She holds a Master's Degree in Christian Spirituality from Creighton University and a Master's Degree in Religious Education from Seattle University. Currently a Pastoral Minister at St. Pius X Church in Reynoldsburg, Ohio, Joan also serves on the faculty of the Wellstreams Program.

SAVE THE DATE:

October 23, 2010: Workshop on Masculine Spirituality

FROM THE EXECUTIVE DIRECTOR



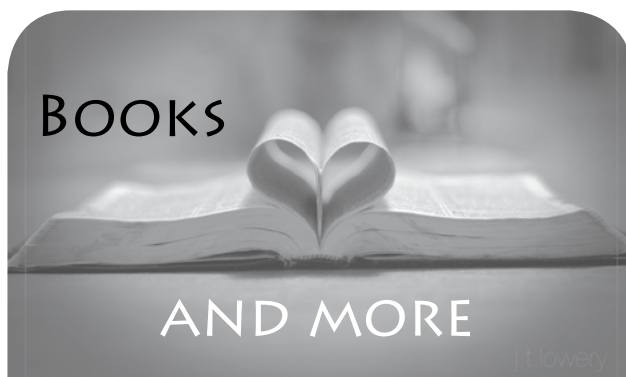
Patricia J. Gibboney, CFRE

What an exciting time to be a part of The Spirituality Network! The “thirst for the living God” has never been greater. During the past several months, we have witnessed an increased request for our resources, including programs and spiritual direction. And we have been uplifted by the commitment of our many volunteers, including Board members, whose gifts of time and expertise allow this organization to be among the finest in the community.

Thanks to the sacrifice and generosity of many people, we were able to surpass the goal of our \$15,000 challenge gift. More individuals responded than ever before to the invitation to meet the challenge. The final tally at the close of the campaign in January was \$19,630! What a remarkable statement you have made. Your support has never been more vital than during these challenging and changing economic times.

Despite the unpredictability of the world around us, the Board and staff of The Spirituality Network remain committed to the mission and the financial stability of the organization. As part of a short-range strategy, the Board members are engaging in strategic dialogues around sustainability at each of their monthly meetings from January to June 2010. The goal is to use the insights gained from the dialogues to reformulate our strategic short- and long-range plans that will support the vitality of The Spirituality Network. We will keep you updated as a late summer Board retreat is being planned.

We are most grateful to all of you who continue with us on our journey. May you be inspired by the words of Pope John XXIII: *Do not walk through time without leaving worthy evidence of your passage.*



Sample, Tex. *Earthy Mysticism: Spirituality for Unspiritual People*. Nashville, TN: Abington Press, 2008.

I first encountered Tex Sample in the DVD series, “Living the Questions.” Sample introduced many of the lessons in the series with a story that drew upon his own life experiences. Like the segments on the DVD, *Earthy Mysticism* uses narrative that draws on Sample’s personal and professional life experiences as a means of revealing a “God of surprises...who comes in the ordinary and the seamy.” Sample uses this approach because he finds “it almost impossible to do ‘devotions’” and cannot sustain a spirituality based on such things as bible reading, meditation, prayer beads, and labyrinths. The entries in this slim volume range from a poignant depiction of his son, Steve, to ones describing his experiences growing up and working in the south. All of the stories in the book can be read in less than 30 minutes but the meaning of each can be pondered long after. This is a book to be read again and again and used as a tool in developing the reader’s own stories.

Recommended by Susan Imel

HELP THE NETWORK THROUGH AMAZON

Your purchase of books, music, gifts, or gift certificates through our Amazon.com link returns a portion of the price to the Network. Bookmark the Amazon Purchase Program link at www.spiritualitynetwork.org.

10TH ANNUAL ARTI GRAS! CELEBRATING 10 YEARS OF CREATIVITY

On February 13, 2010, Arti Gras! Celebration of Art and Spirit was offered for the 10th consecutive year. What began as a hopeful dream has evolved into our signature event. First Community Church's North Campus graciously hosted us in their beautiful building—including their new "Rose Wing" Addition.

This year, 12 presenters offered their time, talent, and materials so that we could explore the creative approach to spirituality; 83 people came to paint, dance, reflect, tell stories, and create in a variety of artistic media. Our hope is that the creative flow continues to move through their lives and into the world.

We were blessed to have a number of local artists donate works for our raffle and silent auction, which raised money to support the ongoing work of the Spirituality Network, with a portion designated for our Women to Women outreach ministry.

With the "traditional" gift for a 10th anniversary being tin, we celebrated by collecting canned goods for a local pantry. Attendees brought enough canned and nonperishable foods to fill four very large boxes.

Jazz musician Arnett Howard closed our day with an exuberant hour of New Orleans Creole jazz and we danced, sang, clapped hands, and stomped feet to his energizing performance.



top row: Serenity and Scent, Lessons from the Cosmos—Fabric Collage; 2d row: Poems, Parables, and Earth Songs, Tender Mercies and Small Blessings; 3d row: raffle browsing, Embodying the Sacraments; 4th row: Bend Me, Fold Me: Spirit and Paper; Beaded Prayers.

Look for more photos and video on our website.

COMMUNITY EVENTS



FIRST COMMUNITY CHURCH

North Campus, 3777 Dublin Rd,
South Campus, 1320 Cambridge
Blvd, 614/488-0681 ext 226, mhett@
fcchurch.com, www.fcchurch.com

Spring 2010 Spiritual Searcher: Alan Berkowitz, PhD. Brownlee Hall, South Campus. April 9, 7-9pm, lecture: *Finding the Temple within and the Meaning of Sanctuary*. April 10, workshops: 9:30am-12pm, *Spiritual Practices for Awakening the Divine Flame Within*; 1-3:30pm, *Aligning Heart and Mind to Promote Health and Social Justice in Our Lives*. April 11, *Inspired Action*, presented with Gran Rockett, 9:30-10:30am, South Campus; repeated 12-1pm, North Campus. Berkowitz is a noted scholar, researcher, and lecturer who is passionate about enhancing and promoting well-being and social justice. Alan and his wife, Gran Rockett, bring their training as psychologists to the subject of inner life, to help individuals find practical solutions to life's deeper questions.

C. G. JUNG ASSOCIATION OF CENTRAL OHIO

Jung Haus, 59 W Third Ave,
Columbus; 614/291-8050; JungACO@
JungCentralOhio.org; www.
JungCentralOhio.org. Contact the Jung
Association for information and/or to
register for these programs.

2nd Saturday Coffee and Conversation,
10am-12pm, free, donations appreci-
ated:

April 10, 2010, *Holding the Tension of
the Opposites in Ecclesiastes 3:1-15*.
Facilitator: Cindy Heyer. What can we
learn from exploring Jung's concept
and the biblical text?

May 8, 2010, *Jung and Astrology*, Fa-
cilitator: Leigh Randolph. We will look
at what this ancient science meant to
Jung.

*What Matters Most: Living a More
Considered Life*, April 16, 7-9pm,
lecture; April 17, 9am-3pm, workshop.

Presenter: James Hollis; First
Community Church: call JACO for
details. Apart from friends, family, and
good work, what matters most in our
lives? What values lead us to a freer,
larger life, a more considered course?
Leading a more conscious life brings
us to choices that either enlarge or
diminish. We will examine the crippling
role fear management systems play
in our choices and how spirituality is a
journey, not an arrival.

MARTIN DE PORRES CENTER

2330 Airport Dr, Columbus; registration/
information: 614/416-1910;
martindeporres@oppeace.org;
www.martindeporrescenter.net

"They Killed Sister Dorothy," April 17,
10am-12:30pm. Facilitator: Elizabeth
Bowyer, SND. Suggested donation
\$10. Register by April 14. Documentary
film about the work and death of
Dorothy Stang, a 73-year-old Notre
Dame de Namur Sister from Dayton
who was shot six times and left to die
on a muddy Amazon road in February
2005. Sr. Elizabeth Bowyer will lead a
discussion of the justice issues involved
in the martyrdom of her friend and
religious sister.

Mandala Meditation, April 22, 1-3pm.
Presenter: Bobbi Gill. Suggested
donation \$5. Register by April 20.
Participants will paint a mandala
using watercolors, adding words
around the circle if they choose, and
will then mount the mandala on a
matting board. No artistic talent or
experience is needed to take part in this
meditation experience.

*Archbishop Fulton J. Sheen: A Saint for
Our Time?* May 4, 7-9pm. Presenter:
Kathleen Riley, PhD. Suggested
donation \$10. Register by May 3. After
a retrospective look at the life and
contribution of Sheen (with some video
highlights), Dr. Riley will explore the
canonization process and how Sheen
might very well be considered a "saint
for our times."

*The Death of Moses, the "Man of God":
From "De Nile" to Denial*, May 11,
1-3pm. Presenter: Rabbi Cary Kozberg.
Suggested donation \$5. Register by
May 10. This session will focus on both
the Scriptural narrative and poignant
rabbinic depictions of how Moses
understood and responded to his
own impending demise. Within the
discussion, spiritual/ethical questions
surrounding end-of-life issues will be
highlighted.

Diversity in Unity, June 24, 7-9pm,
presenter: Fr. Ignatius Harrington,
pastor of Holy Resurrection Melkite
Greek Catholic Church. Suggested
donation \$10. Register by June 22. As
he makes some comparisons between
the Byzantine and Roman Catholic
churches, Fr. Ignatius will explain the
historical roots of the "autonomous
Ritual Churches"; video presentation
on Byzantine liturgy.

Spiritual Gerontology Courses (graduate
credit available): July 12, 9am-July 14,
12pm: *Well in Body, Wise in Mind and
Whole in Spirit: Optimal Spirituality
and Health for Maturing Adults*.
July 14, 1pm-July 16, 4pm: *The Ten
Spiritual Developmental Tasks of the
Illumination Years: Aging Gracefully
and Strengthening Spirituality in
the Decades beyond Midlife (65+)*.
Presenter: Dr. Richard Johnson,
founder, Johnson Institute for Maturing
Adult Faith Formation. \$250/course;
\$400 both; includes lunch. Overnight
accommodations available. Check
website for details about fees and
course credit. *A minimum of 10 students
must be registered by June 15 for the
courses to be offered.*

OHIO DOMINICAN UNIVERSITY CENTER FOR DOMINICAN STUDIES

Colonial Room, Sansbury Hall, 1216
Sunbury Rd, Columbus; 614/251-
4722; www.ohiodominican.edu/
about/dominicanstudies/events.asp.
Registration is required for all events:
e-mail Sr. Catherine Colby, colbyc@
ohiodominican.edu.

Dominican Conversation Circles Lecture and Dinner. Being Peace: Engaging Our Hearts, March 16, 2010, 6pm, Colonial Room, Sansbury Hall. Presenter: Helen Cahill, OP, MA, D Min, a Dominican Sister of Peace and an experienced spiritual director. She holds a Master in Theological Studies and a Doctor of Ministry from Catholic Theological Union. Helen's ministry includes giving retreats, doing group supervision for formation personnel and conducting workshops on "The Spirituality of Power" and other topics.

Cosmology, Faith and Sustainability, March 24, 2010, 7pm, Colonial Room, Sansbury Hall. Presenter: Miriam MacGillis, OP, Caldwell Dominican Sister Miriam MacGillis is the co-founder of Genesis Farm, a learning center for earth studies located in Blairstown, New Jersey. She lectures extensively and has conducted workshops in the US, Canada, Europe, Asia, and the Pacific. In 2005, she was presented with the Thomas Berry Award by the Center for Life and the Environment, and in 2007 was named among the planet's top 15 green religious leaders by *Grist* magazine.

Dominican Life of the Mind Lecture Series: Catherine of Siena, April 29, 2010, 7pm, Colonial Room, Sansbury Hall. Presenter: Juliana D'Amato, OP, member of the Dominican Sisters of Peace, Professor Emerita of Italian and Art History, Albertus Magnus College. An area of her scholarly work was devoted to the translation of Catherine of Siena's letters. For the past 2 years, she has served as secretary for the Dominican Sisters Transition Team.

THE SPIRITUAL CENTER OF MARIA STEIN

2365 St Johns Rd, Maria Stein, Ohio; toll free 877/925-7625; spiritualcenter@watchtv.net; www.spiritualcenter.net

Retreat in the Real World, three options: online through Creighton University, download an audio version, or use the

book *Retreat in the Real World*. The Spiritual Center will host a small group meeting every 2 weeks (April-Dec.) to help guide you during this retreat. Information session, April 6, 7pm, with Suzanne Lammi. Books will be available for purchase that evening for anyone wishing to use that format. Donation for each group session: \$5. RSVP by April 2.

Women...Wisdom Guides from God's Story, April 9-11, Friday 7pm-Sunday, 1pm. Presenter: Sr. Carol Gaeke, OP. \$169 (room, meals, and materials). Register by April 2. Women of faith need energizing wisdom figures to inspire their souls. By reflecting on women of the Scriptures who have encountered God in their lives as single women, pregnant women, leaders, and life givers, we are encouraged to find God more deeply in our own souls to tap into our own wisdom.

Getting in Touch with Nature, a Walk of Discovery, April 24, 10am-1pm. Presenter: Dr. Robert Hiskey, Associate Professor of Biology, Wright State Lake Campus. \$15 donation includes lunch. Please register by April 22. Bring your cameras and observe spring wildflowers, trees, and animals living among them, as Dr. Hiskey leads a nature walk through the primitive pathways of the Spiritual Center Woods.

Wrestling with God, June 7-11, Monday 7pm-Friday 1pm. Presenter: Fr. Harry Meyer. \$315 donation includes accommodations, meals, and retreat. Register by May 28. "Our spiritual journey for this time together will be honestly facing the challenge of our personal evolving relationship with the Awesome Mystery of God while attempting to live faithfully the way of life taught by Jesus, the Christ."

Unveiling the Mystery and Spiritual Richness of Holy Icons, June 11-13, 2010, Friday 7pm-Sunday, 1pm. Presenter: Sr. Marsha Klowan, OSF. \$160 includes

accommodations, meals, and retreat. An historical overview comparison of East and West Church; religious art, worship, theology, symbolic language, and characteristics of Icons. Sr. Marcia will lead retreatants into the experience of Icon prayer through The Prayer of the Loving Gaze.

The Heart of Centering Prayer, June 11-13, Friday 7pm-Sunday, 1pm. Presenter: Sr. Dorothy Feltz. \$160 includes accommodations, meals, and retreat. Register by May 28. What "Centering Prayer" is and is not; how Centering Prayer leads into contemplative prayer; practicing Lectio Divina, and extending the effects of Centering Prayer into daily life.

ST. THOMAS MORE NEWMAN CENTER
64 W Lane Ave, Columbus, 614/291-4674; www.thenewmancenter.net/wcms/index.php

Praying Your Life, June 9-14, 2010 led by Fr. Vinny McKiernan at St. Therese Retreat House, 5277 E Broad St, Columbus; June 21-25, Paulist Retreat House, Lake George, NY.

ST. FRANCIS SPIRITUALITY CENTER
200 St. Francis Ave, Tiffin;
419/443-1485; e-mail: retreats@stfrancis spiritualitycenter.org; spirituality.sfctiffin.org

Forgiveness Retreat, March 26-27, Friday 7-9 pm, Saturday 9am-3pm. Presenter: Fr. Frank Murd and Sr. Bobbie Doneth, OSF, \$25 (commuter, includes Saturday noon meal) \$65 (includes overnight accommodations, breakfast and noon meal).

Listening to the Music of Creation: Learning the Dance of the Universe, April 23-25, Friday 7pm to Sunday noon. Presenter: Carrol Marozzi, CSJ. Donation \$170. Through prose, poetry, and scripture, we will be encouraged to experience a sense of unity with all of life and thus be challenged to take

continued on p. 10

COMMUNITY EVENTS *from p. 9*

greater responsibility to care for the earth and all that inhabit our planet.

Sabbath Journey: A Pilgrimage of the Heart: a retreat designed for seniors, May 2-8, 2010. This retreat invites you to focus upon the rich biblical tradition of Sabbath, of dwelling before God in a sense of time beyond our control, beyond our agendas. Participants are guided on a pilgrimage of the heart through the contemplative invitations to listen, release, forgive, and ultimately embrace all that is before us in God's creation, in Kairos time.

COMPASSIONATE COMMUNICATION OF CENTRAL OHIO

Jeff Brown, jeff@nvcoho.org or 614/558-1141; www.nvcoho.org

Embodying Compassion: Experiential NVC Workshop, April 16, 6:30-9:30pm & April 17, 9:30am-5:30pm, St. Stephen's Episcopal Church, 30 W Woodruff Ave. Presenter: Dian Killian, PhD. Integrate your practice of inner peace and compassion for others through experiential and kinesthetic exercises. Friday: Introduction to Compassionate Communication; Saturday: Embracing the Body—Embodying Compassion in Your Life; Sunday, 1pm-5:30pm, special session for facilitators. Cost: Fri. only: \$30 earlybird (by 3/17); \$40 regular; Sat. only: \$80/100; Fri & Sat: \$90/120.

ABWOON RESOURCE CENTER AND SHALEM CENTER

resourcecenter@abwoon.com; www.abwoon.com

Green Sufism: Deeply Ecological Pathways of the Heart, May 14-16, 2010, Martin de Porres Center. Presenters: Neil Douglas-Klotz, PhD, & Murshid Saadi Shakur Chishti. \$175. focuses on resources that invite us into a deeply ecological experience of the human soul and its purpose in consonance with the whole natural world and all beings. Included will be Sufi stories and teachings from Inayati and classical Sufism, from the Quran and Hadith, as well as Dances of Universal Peace, Sufi zikr (remembrance practice), walking meditations, silent meditation, and guided "journeys" through a selection of the "pathways of the heart."

STS. PETER & PAUL RETREAT CENTER

2734 Seminary Rd, Newark, 740/928-4246; www.stspeterandpaulretreatcenter.org

Directed Retreat, May 16-23, 2010 & August 1-8, 2010. Facilitator: Sr. Janice Bachman, OP. \$495 for 7 overnights with meals and 45-60 min. daily meeting with director. Opportunity to tend to your heart and spirit in the retreat center's quiet, beautiful, and rustic grounds that manifest the presence of God. The retreatant meets with an experienced retreat director for 45-60 minutes on each full day of the retreat to share their experience of prayer and whatever is going on between them and God throughout the day.

ONGOING GROUPS

CENTERING PRAYER

Led by Fr. Vinny McKiernan, CSP, at the Newman Center, 64 W Lane Ave, Columbus, Mondays 7-7:45pm and Tuesdays 12:15-1pm. 614/291-4674; e-mail: vinnycsp@yahoo.com

TURNING LEAVES AND TEA LEAVES

Second Wednesdays, 2-3:30pm. A monthly book club facilitated by Marialein Anzenberger, OP, and Colleen Gallagher, OP. Martin de Porres Center, 2330 Airport Dr, Columbus; 614/416-1910; martindeporres@oppeace.org; www.martindeporrescenter.net

BLUE HERON SANGHA

Martin de Porres Center, 2330 Airport Dr, Columbus, Tuesdays, 7:15-8:45pm. A mindfulness community in the tradition of Thich Nhat Hanh. Contact Sandy at scoen@columbus.rr.com.

THOMAS MERTON STUDY GROUP

First Mondays, 6-8pm. Vespers in Motherhouse chapel, 2320 Airport Dr, are followed by discussion of Merton readings, led by Merton scholar David Belcastro, PhD. Hosted by Martin de Porres Center, 614/416-1910.

INTERNATIONAL WOMEN'S WRITING GUILD

A network for the personal and professional empowerment of women through writing. Meetings twice monthly, free and open to all, for writing, reading, and gentle critiquing in a safe, supportive environment. *March 20, 10am-12:30pm*, Whetstone Library, 3909 N High St. *April 3, May 22, 10am-12:30pm*: Columbus Public Library, 96 S Grant Ave, 3rd Fl. Board Room (microwave available). *April 17, 10am-1pm*, Alison Hazelbaker's health practitioners building, 5115 Olentangy River Rd. For other meeting times/locations or to receive our monthly newsletter, contact Jeanne Marlowe at jamarlowe@juno.com, 614/476-8802.

INTERFAITH ASSOCIATION OF CENTRAL OHIO SPIRITUAL SHARING GROUP

April 7, May 5, June 2, 12-1pm, Columbus Metropolitan Library, 96 S Grant Ave, 3rd fl board room. Share concerns, exchange views, and build relationships.

Forum on Interfaith Marriage, May 16, 2-4pm: Columbus Metropolitan Library Auditorium, 96 S. Grant Ave, free and open to everyone.

Contact Jeanne Marlowe, 614/476-8802; jamarlowe@juno.com. IACO represents eight major faith traditions—Baha'i, Buddhist, Christian, Hindu, Islam, Jain, Jewish, and Sikh—and holds open houses and educational forums in various locations; see www.iaco.org for details.

JOURNEY OF THE MARBLE HEART

MY MARBLE HEART

by Amy Nicholson

Deep, shimmering, metallic grey.
Patterned by rusty iron red and a feather mossy green.
In the center facing me — Africa.
Africa touched on 3 sides by grey seas.
Africa, touching on, stretching into Europe, Asia.
A small sea up near Iceland, Scandinavia.
My heart is small, solid, warm.

What is deep inside my heart?

Chaos?
confusion...
warmth and wonderment,
welling deep
weaving through
MY HEART

It's the warmth,
the intricate webs,
spidering up,
into over
under through
entangled
freeing
holding
MY HEART.

THE WISDOM OF THE MARBLE HEART

by Ed Lawry

The heart "encourages"—it speaks to me of more—of "moreness." No matter how clogged my life becomes, no matter how much it seems like an eternal midpoint, there is a secret, underground river of grace blessing what I do and what happens to me. It doesn't urge me to "fare forward" as much as reassures me that I am carried by a wellstream of beauty and loving concern. It suggests to me that I merge myself with its loving atmosphere and become a heart to myself—a heart to others.

On December 5, 2009, MJ Abell offered a workshop, Journey of the Marble Heart, at the Spirituality Network. Each participant chose a marble heart and responded to writing prompts about it. Participants were invited to share their reflections in the newsletter.

OBLIQUE HEART

by Sandra Kerka



The surprise of that thick white band, off to one side, where the better part of me has been for too long. The band cuts off and bisects the heart into extremely unequal sections, just as the balance of my life has been seriously unequal. The band speaks of constriction, and yet, viewed from the side it forms an "O"—an inviting portal to the mysteries within.

That murky spot in the center also hints at hidden depths. Perhaps it is the faded protective overgrowth of a long-ago wound. Perhaps it is really God's thumbprint that has touched this heart, saying "You are mine." Not a bright spot calling attention to itself, but a gentle constant presence. Someone should dust me for God's fingerprints, which may reveal how persistent the divine digit has been in nudging my heart closer.

What wisdom does this heart have for me?

Move from the sidelines to the center.

Remember what is at your core.

When you are constricted, look at it from another angle.

Find another way in.

God always does.

Wear that band as a sign that you are marked "FOR LIFE."



444 E Broad St
Columbus OH 43215
spiritntwk@hotmail.com

LET US KNOW YOUR PREFERENCE!

Reducing printing and mailing costs through the use of more electronic communication is one option for making the best use of our limited resources. **Please let us know your preference for receiving this newsletter: PRINT or ELECTRONIC?**

E-mail or mail your response to The Spirituality Network (addresses above).

Follow us on Twitter: www.twitter.com/spiritntwk.

On Facebook, www.facebook.com, search: "Spirituality Network, Columbus, Ohio"

The Spirituality Network is an ecumenical outreach addressing the "thirst for the God of Life." Founded by Christians, our aspiration is to be a community of acceptance and inclusion. We seek to create hope, peace, and purpose in our community.

Our programs include:

- Wellstreams Ecumenical Program and Training
- Spiritual Direction Referrals
- Retreat Planning and Facilitation
- Continuing Education for Spiritual Directors and those in companioning ministry
- Women to Women Listening Ministry

WISH LIST

We are looking for used paper (clean on one side) to use with our copier. We have one faithful provider and could use more. Thank you!

SHOP AT KROGER'S AND BENEFIT THE SPIRITUALITY NETWORK

We thank Kroger's for helping our community prosper with this innovative program to give back to local nonprofits. Use your Kroger Plus Card and The Spirituality Network will receive a percentage of your bill. Just shop, swipe your card, and earn cash for The Spirituality Network. The code for The Spirituality Network is 84360. Visit www.krogercommunityrewards.com to register your card and activate the process. If you do not have a Kroger Plus card, they are available at the Customer Service desk at any Kroger.

SOCIAL JUSTICE *from p. 3*

We have talked about involving ourselves in this ministry on a regular basis or, perhaps, working at some other location where volunteers are needed. The Largest Table, a free community meal at which all are welcome, is held every Wednesday at noon at St. John's United Church of Christ downtown. They would certainly welcome our participation.

We know there are many ways for this organization to go out from self and be involved in issues of social justice. If you have any ideas, please let us know. Your suggestions should be ones in which you also would be willing to participate. We need more people than just board members to be involved. Please give this idea prayerful consideration.